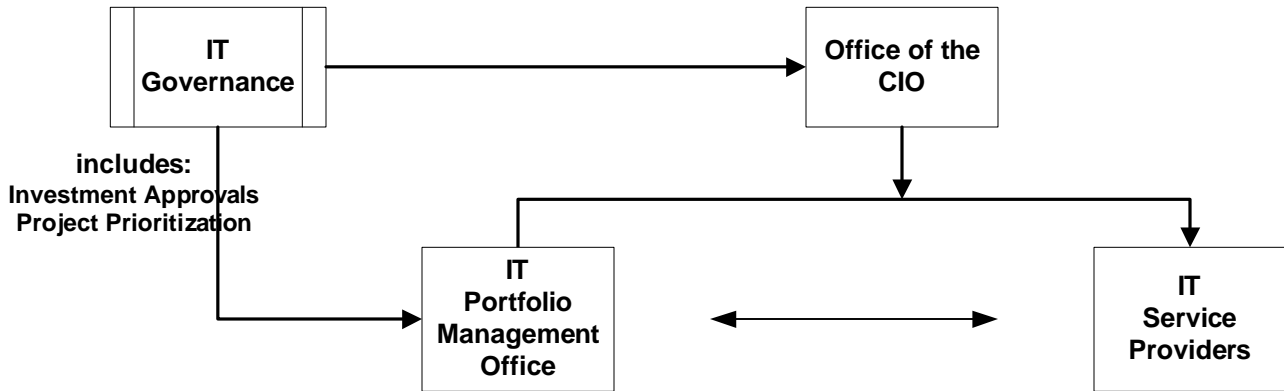


# IT "Information" Flow

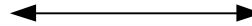


## IT REPOSITORY

The Repository provides a "mile high" integrated view of the three domains; 'Demand', Assets, Resources. They provide an enterprise perspective of IT activities in support of IT governance objectives, goals and scope.

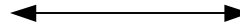
includes:  
IT "Demand"  
(Proposed initiatives, Requests and the in-progress Project "Pipeline")

**Project Management**  
(including initiation, execution, closure)



includes:  
IT Assets:  
\* Applications  
\* Infrastructure Services

**Service Catalog and CMDB**



includes:  
IT "Resources"  
\*skills  
\*allocations  
\*availability  
\*funding

**Resource Management**  
(Human Resources, Budgeting)

