

CSAHS BULLETIN

• Summer 2005

A Newsletter for Alumni of the College of Social and Applied Human Sciences

DWIVEDI NAMED TO ORDER OF CANADA



UNIVERSITY PROFESSOR emeritus O.P. Dwivedi of the Department of Political Science has been named a Member of the Order of Canada, considered the country's highest honour for lifetime achievement. He was among 74 Canadians appointed Feb. 9 by Governor General Adrienne Clarkson.

Dwivedi was recognized for "contributions that span continents and cultures," including being a scholar and expert in public administration and the environment, advising Canadian and foreign governments, serving as a spiritual counsellor to prisoners and students, leading the local Hindu Cultural Society, and founding and financing schools and a walk-in clinic in his birthplace in India.

Research support up 80%

SEVEN YEARS AFTER CHAMPAGNE glasses toasted the launch of the new College of Social and Applied Human Sciences in May 1998, this amalgamated academic giant has emerged as a source of research strength in the University. Despite undergoing a transition period in which almost half of its faculty have retired and been replaced, the college has seen enormous success on the research front.

Total research support has increased 80 per cent since 1999/2000, says dean Alun Joseph, and that increase in funding parallels gains in research productivity and external recognition.

CSAHS has recruited five Canada Research Chairs, three University Research Chairs and a privately endowed research chair and raised more than \$4.2 million in additional infrastructure funding and \$2 million in funding for two Community-University Research Alliances from the Social Sciences and Humanities Research Council. In addition, total research funding in CSAHS is expected to hit \$4 million this year.

A sampling of recent research achievements and infrastructure awards are presented on page 4. They illustrate the strength and diversity of research programs across the college, as well as the contributions of both established faculty and newcomers just begin-

ning their research and teaching careers.

Joseph says strong disciplinary research in all CSAHS units — Economics, Family Relations and Applied Nutrition, Geography, Hospitality and Tourism Management, Marketing and Consumer Studies, Political Science, Psychology and Sociology and Anthropology — provides the foundation for interdisciplinary and cross-disciplinary research in the Centre for Families, Work, and Well-Being and elsewhere that characterizes new strengths in the college.

By investigating its own research portfolio, CSAHS has identified four major "research themes" that will provide a strategic framework for future growth:

- human health and services;
- public policy, organizational management and leadership;
- environmental and natural resource management; and
- international studies.

While strengthening expertise within CSAHS, these areas of focus will also promote research partnerships across the University of Guelph campus and beyond. CSAHS is committed to fostering U of G's reputation as a leading research university where dynamic research programs enrich academic programs and benefit Canadian society and the global community.



WHAT'S INSIDE

MAC RESTORATION	2
TEACHING AWARDS	3
RESEARCH RESULTS	4

RESEARCH RECOGNITION	5
NEW FACULTY	6
CAREER NIGHTS	8

Message from the dean

THE COLLEGE OF SOCIAL AND Applied Human Sciences continues to go through a series of transitions and to contemplate new directions. The year 2004 was particularly notable for its “comings and goings.” Nineteen new faculty members and four staff members joined the college as 10 faculty and four staff retired. What is heartening, though, is that our retirees continue to contribute their time and talents to the college and to flourish as scholars. The example of political scientist O.P. Dwivedi, who was recently awarded the Order of Canada, is indicative of what “retirement” means for many of my colleagues!

Inside these pages, you will be introduced to the college’s new faculty members; to Jennifer Barrett, who joins us as senior manag-



er for development; and to our new website launched in March. You will also hear of continued success and distinction in research and teaching. There are too many out-

standing individuals to mention here — I am constantly amazed at the productivity of my colleagues as they seek to advance their disciplines and to “make a difference.”

In closing, I would like to welcome Prof. Chris McKenna, past chair of the Department of Economics, back to the college. Now serving as the University’s associate vice-president (research), he has been seconded to the college until Dec. 31, 2005, to facilitate discussions about the possible translation of the Faculty of Management into an independent college within the University of Guelph. These discussions are under way, and Chris and I will be taking a preliminary recommendation to the provost and the president this spring.

ALUN JOSEPH, DEAN

SHE’S LOOKED AT GUELPH FROM ALL SIDES NOW

JENNIFER BARRETT, BA ’96 and MA ’01, has experienced the campus as an undergraduate, grad student, teaching assistant and graduate. Now she’s joined the staff as senior development manager for the College of Social and Applied Human Sciences.

Barrett, who studied sociology at Guelph, joined the college in November



after spending the last three years working for the Canadian Cancer Society in volunteer development and fundraising.

To talk to Barrett about giving opportunities that will benefit students and faculty in CSAHS, call her at 519-824-4120, Ext. 53371, or send e-mail to jbarret@uoguelph.ca.

MAC RESTORATION PROGRESSES



When the gerontology program held its career night Jan. 26, these graduates and students took advantage of the Alumni Heritage Room to thumb through the Macdonald Institute history book. From left are Laura McCran-McDermott, B.A.Sc. ’01; Jane Holland, B.A.Sc. ’02; second-year student Julia Herdman; and Gerontology Student Association president Raveen Kalra.

AS THE MACDONALD INSTITUTE building progresses into its second century, a much-needed facelift is under way, thanks to the generosity of donors and friends. Restoration projects reflect the historical significance of the 1903 building and the passion of alum-

ni volunteers who recognize the importance of making the space functional for teaching in today’s technological environment.

The following projects have been completed:

- Alumni Heritage Room, unveiled in June 2003;
- renovations to five classrooms and labs;
- repairs to the metal cornice in the inner courtyard;
- replacement of clay tiles on the front porch;
- refinishing of the wooden floors and front doors;
- renovations in the Centre for Studies in Leadership; and
- renovation of the faculty/staff lounge.

University resources have also permitted upgrades to meet fire, electrical and other safety requirements, many of which are not visible to visitors and students.

In January, the Mac-FACS Alumni Association renewed its commitment to the building’s restoration and pledged support to the effort to raise \$250,000 to complete repairs to the main staircase and restore the stained-glass windows. A heritage committee has been formed, and graduates are encouraged to join the effort. The college welcomes volunteers willing to lead informative history tours of the building for new students during the September orientation period.

CSAHS inaugurates teaching awards

FIVE EXCEPTIONAL U OF G educators were recognized in 2004 with the inaugural College of Social and Applied Human Sciences (CSAHS) Teaching Awards.

Three professors — Carol Dauda, Political Science; Linda Hunter, Sociology and Anthropology; and Clare MacMartin, Family Relations and Applied Nutrition — were selected by the college teaching awards committee for their innovative and effective instruction. Two graduate students, Burc Kayahan and Umut Oguzoglu, both of the Department of Economics, received the Graduate Student Teaching Awards.

“The College of Social and Applied Human Sciences is responsible for teaching one-third of the undergraduate students on this campus, and these awards are helping to demonstrate how seriously we take that role,” says CSAHS dean Alun Joseph.

The former colleges of Family and Consumer Studies and Social Science both had teaching awards that were discontinued when the two colleges merged to form CSAHS in 1998. Joseph launched an awards committee in fall 2003 to develop a new awards program that would recognize innovation and outstanding learning outcomes. All the inaugural award recipients showed a creative use of technology, and their teaching is enhanced by extensive community involvement and professional work outside the University.

Dauda has taught a range of courses spanning large-enrolment first-year courses to more specialized fourth-year courses during her contract in the Department of Political Science. A research associate at the University of Toronto’s Centre for Urban and Community Studies, she has conducted research in Uganda, Zimbabwe and South Africa on local government and political decentralization.

Hunter is an assistant professor who integrates various forms of media, including film excerpts, art slides and music, into her classes to bring alive potentially remote subjects such as 19th-century sociological theory. Her teaching is enriched by her considerable community work, which has



Cutline: The first recipients of the CSAHS Teaching Awards include, clockwise from top left: Profs. Linda Hunter and Clare MacMartin, graduate student Burc Kayahan and Prof. Carol Dauda. Missing from the photo is graduate student Umut Oguzoglu.

included serving as the health promotion co-ordinator for the AIDS Committee of Guelph and Wellington County.

MacMartin is an assistant professor who, in her short time at U of G, has revamped courses in content and mode of presentation, making use of electronic forms of instruction. She spent six years in clinical practice and is the associate editor of *Theory and Psychology*.

Kayahan, a two-time winner of the award for best teacher in the business program at the University of Guelph-Humber, was nominated because of his “tough love” approach. His students say he creates a wonderful atmosphere by cajoling and challenging them to succeed, while steering them away from excuses and lethargy.

Oguzoglu’s most significant contribution as a graduate teaching assistant is that he has enhanced the learning experience and learning outcomes of hundreds of economics students. Known as a superb classroom instructor, he has also developed original teaching software for his course.

Joseph says the nominees reflect the growing strengths in the college. The faculty winners are all recent hires.

“It’s very encouraging for me to know that the people we’re bringing in are clearly not taking teaching for granted.”

He adds that the graduate student winners demonstrate how much international students have to contribute to undergraduate education. Both winners happen to be PhD candidates from Turkey.

PHOTO BY MARTIN SCHWALBE

Research results and recognition lead to

RESEARCH SPOTLIGHT SHINES ON RURAL WOMEN

EMPOWERING WOMEN IN RURAL Canada to influence public policy, manage their unique challenges and create change is the focus of a \$1-million national research project headed by Prof. Belinda Leach, Sociology and Anthropology. She is leading a team that has received a grant from the Social Sciences and Humanities Research Council (SSHRC) for the Rural Women Making Change Research Alliance.

“We are doing something that has never been done before,” says Leach, who also holds a University Research Chair in Rural Gender Studies. “We are bringing together a team of community and academic experts from across the country to specifically look at the work and life issues that are affecting and challenging women in rural Canada.”

A blend of advocacy, research and knowledge dissemination, the alliance includes representatives from the Canadian Auto Workers Union, the National Farmers Union, Agriculture and Agri-Food Canada, the Women’s Employment Resource Centre and Women Today of Huron, as well as academics from U of G, the University of Western Ontario, the University of Victoria and York University. The cross-Canada partnership will be run out of Guelph’s Centre for Families, Work and Well-Being.

Rural life in Canada continues to change, and women seem to be bearing the brunt of rural economic transformation, says Leach. Women are simultaneously dealing with disappearing social services, declining farm incomes and fewer employment and schooling options. Many hold down full-time jobs both on and off the farm while continuing to be the primary caregivers of children and elderly relatives.

In addition, in some rural communities, services once offered by various levels of government are now provided by women through local resource centres on a volunteer basis.

“Yet the absence of gender analysis of the changes taking place in rural Canada is quite striking,” says Leach. “We wanted to do something about that. We hope to engage women more directly in what’s happening

to them and to their communities, and to recognize their capacity to create change in a meaningful way.”

DIETITIANS SERVE UP GOOD ADVICE



Paula Brauer

FROM FAD DIETS TO WEIGHT-LOSS clinics, there’s increasing awareness of the links between eating habits and health, but many people may not be getting the right advice at the right time or place, says Prof. Paula Brauer of the Department of Family Relations and Applied Nutrition. That’s why she’s collaborating with the national organization Dietitians of Canada and family doctors in Ontario to develop an improved nutrition services model.

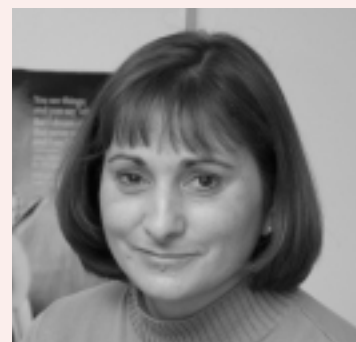
Primary health care is vital because it’s the universal first point of contact for people with health concerns, says Brauer. And that makes it an excellent place to locate health-promotion and disease-prevention services, including the work done by dietitians.

Currently, family physicians in some Ontario communities don’t have access to dietitians — or numerous other health professionals, for that matter. Some family doctors have formed groups called Family Health Networks to provide co-ordinated care to their patients as part of ongoing health system reform. Now Brauer and her colleagues want to bring dietitians and their expertise to Ontario’s primary health-care system.

“What we’re trying to do by phasing dietitians into this primary health-care setting is to reinforce the idea that health, diet and nutrition are all closely linked,” she says.

The end goal is to implement an integrated primary health-care system where patients can access many locally based health professionals, including dietitians, mental health workers, social workers, chiropractors and pharmacists.

PSYCHOLOGIST READS BETWEEN THE LINES



Prof. Marcia Barnes

AFTER SPENDING 11 YEARS as a psychologist and researcher, Prof. Marcia Barnes, Psychology, arrived on campus last July and holds a University Research Chair position. She investigates how reading comprehension and mathematical skills develop and why some children have difficulty acquiring them.

She says numeracy and text literacy (the ability to use reading to acquire new knowledge) are necessary for academic and vocational attainments, although less is known about the development of these skills than is known about how children learn to read. Understanding how these skills are acquired in typically developing children and in children with learning disabilities is important for early identification of children at risk and designing intervention programs.

Barnes’s research includes a study on the math difficulties of children with spina bifida began seven years ago when she was working at the Hospital for Sick Children as a clinician-scientist and researcher.

She is also co-ordinating the neuropsychology part of a multinational clinical trial to determine if moderate hypothermia treatment improves cognitive outcomes in

increased funding

children with severe head injuries.

And in an earlier study, she examined how an accident at different points in a child's brain development can affect the acquisition of reading skills. Most recently, she has begun a study looking at what reading and language factors contribute to reading comprehension in English- and French-speaking children in Ontario and Quebec.

LOOKING AT ECONOMIC GROWTH

PROF. THANASIS STENGOS, Economics, was recently appointed to an University Research Chair (URC) to advance his work on the development of statistical tools that would allow for proper empirical analysis of economic phenomena.

In terms of basic research, Stengos has worked for more than 10 years on developing estimation methods and testing procedures for models that can allow for flexible specifications. These techniques are used in applied research to analyze issues related to economic growth and development and, more specifically, the relationship between human capital and economic growth.

Other applied areas of interest include labour economics to examine the problem of wage rigidities, applied demand analysis to investigate the size of the underground economy, and financial economics to examine the properties of asset returns.



Prof. Thanasis Stengos

FEDERAL/PROVINCIAL FUNDING BENEFITS NEW FACULTY

SINCE PUBLICATION OF THE LAST CSAHS *Bulletin*, four college faculty have received partnership funding from the Canada Foundation for Innovation (CFI) New Opportunities Fund, the Ontario Innovation Trust (OIT) and other research partners. These combined grants provide research infrastructure to help launch the careers of talented faculty in their first full-time academic appointment.

Prof. Heidi Bailey, Department of Psychology, will receive about \$272,000 to study the effect of maternal history of maltreatment on the mother-child attachment relationship and children's socio-emotional development.

She's interested in how parents' childhood abuse experiences, and the extent to which they have resolved these experiences, influence interactions with their own children.

Prof. Myrna Dawson, Sociology and Anthropology, is studying the controversial defence of mental disorder — what used to be called the “insanity” defence — and how it's been used in Ontario homicide trials. By learning the fates of Canadian defendants who employ the defence, she hopes to understand how the plea is used and what kind of treatment its users should receive. Her work will benefit from CFI/OIT partnership funding of \$239,000.

Prof. Kris Inwood, Economics, will receive \$766,000 in infrastructure support for a joint project that is producing a first-of-its-kind database of the 1891 Canadian census. He's working with faculty in the College of Arts to analyze information from the census, which contains distinct features such as information on unemployment, birthplace of parents and dwelling characteristics.

Profs. Ximing Wu and Miana Plesca, both of Economics, will receive almost \$176,000 to use computer-intensive methods for the study of labour and applied welfare economics. Since coming to U of G in 2003, the researchers have initiated research in areas such as labour and welfare economics, development economics, econometrics and information theory.

CSAHS RESEARCH SUMMARY

Canada Research Chairs

- **Rob de Loë, Geography**
CRC in Water Management
- **Serge Desmarais, Psychology**
CRC in Applied Social Psychology
- **Barry Smit, Geography**
CRC in Global Environmental Change
- **New Chairs in 2005**
The college has received

approval for additional CRCs in Behavioural Neuroscience and Public Policy Related to Gender and Criminal Justice. Faculty recruitment is under way to fill these positions.

University Research Chairs

- **Marcia Barnes, Psychology**
- **Belinda Leach, Sociology and Anthropology**
- **Thanasis Stengos, Economics**

Community-University Research Alliances

- **Kerry Daly, Family Relations and Applied Nutrition**
Father Involvement Research Alliance
- **Belinda Leach, Sociology and Anthropology**
Rural Women Making Change

Jarislowsky Chair in Families and Work

- **Donna Lero, Family Relations and Applied Nutrition**

For more information on CSAHS research partnership opportunities, contact Angela Vuk, manager of Research and Business Development, at avuk@uoguelph.ca or 519-824-4120.

New faculty support strategic research plan



CSAHS WELCOMES NEW FACULTY

Front row, from left: Sunghwan Yi, Talat Genc and Lisa Kowalchuk. Back row: Andrea Buchholz, Madonna Maidment, Jordi Diez, Satsuki Kawano, Tim Mau, Melissa Gabler, David Stanley, Anton Miglo, Carolyn Tubbs and Marcia Barnes.

Research interests: Comparative public policy, international relations, globalization and the internationalization of public policy, and the politics of the European Union (EU).

Current work: Evolution of supranational trade and environmental policy integration in the EU and the World Trade Organization; the relationship between trade-related intellectual property rights and biodiversity policy; international agricultural biotechnology policy; and inter-governmental relations in food safety.

Background: PhD candidate, McMaster University.

TALAT GENC

Department of Economics

Research interests: Industrial organization, energy economics, deregulation, applied econometrics.

Current work: Electricity markets and deregulation and large-scale oligopolies under uncertainty.

Background: PhD, University of Arizona.

SATSUKI KAWANO

Department of Sociology and Anthropology

Research interests: Ritual, religion, aging, kinship, identity and gender in Japan.

Current work: Ritual, death and aging in contemporary Japan.

Background: PhD, University of Pittsburgh.

LISA KOWALCHUK

Department of Sociology and Anthropology

Research interests: Social movements, land reform, Central America and the class basis of the Quebec independence movement.

Current work: Anti-globalization social movement struggle and Canadian professors as public intellectuals.

Background: PhD, York University.

TIM MAU

Department of Political Science

Research interests: Public-sector leadership, military leadership, nationalist mobiliza-

MARCIA BARNES

Department of Psychology

Research interests: How children develop skills in reading comprehension and mathematics.

Current work: The developmental precursors of reading and math skills in typically developing infants and preschoolers and in those at neurobiological or environmental risk for later learning difficulties; the cognitive and neurobiological sources of learning disabilities in these areas of academic function.

Background: PhD, McMaster University.

ANDREA BUCHHOLZ

Department of Family Relations and Applied Nutrition

Research interests: Energy expenditure and body composition in health and disease.

Background: PhD, University of Toronto.

BEN BRADSHAW

Department of Geography

Research interests: Environmental economic geography, resource management.

Current work: New forms of environmental governance (corporate environmentalism, community-based resource management, etc.); environmental implications of agricultural biotechnology adoption; and farm-level adaptation to multiple risks.

Background: PhD, University of Guelph.

JORDI DIEZ

Department of Political Science

Research interests: Comparative politics; Latin American politics, particularly Mexico; democratization; environmental and forestry policy-making; civil-military relations; hemispheric security cooperation; and gender and politics.

Current work: Environmental policy-making and legislative oversight of the armed forces in Mexico.

Background: PhD, University of Toronto.

MELISSA GABLER

Department of Political Science

n and teaching initiatives

tion strategies, globalization and the progression of regional integration, French-English relations, and local politics.

Current work: Paul Martin's leadership with respect to the "new deal" for cities.

Background: D.Phil., Oxford University.

MADONNA MAIDMENT

Department of Sociology and Anthropology

Research interests: Feminist criminologies, sociology of punishment and control, electronic surveillance technologies and wrongful convictions.

Current work: Systemic issues of wrongful convictions, and state controls in the lives of criminalized women.

Background: PhD, Carleton University.

ANTON MIGLO

Department of Economics

Research interests: Corporate finance and theory, financial markets.

Current work: Corporate finance and theory of contracts with a focus on issues related to asymmetric information, property rights, financial markets in transition economies and incomplete contracts.

Background: PhD, Saint-Petersburg State University; PhD, University of Quebec at Montreal.

LEIGHANN NEILSON

Department of Marketing and Consumer Studies

Research interests: Social and cultural influences on consumption; history of marketing; research methodology, particularly interpretive and historical methods; marketing in cultural institutions.

Current work: Investigating the production and consumption factors that influence the consumption experience of performance; examining the influence of social memory on consumption, focusing on social memory of the Acadian expulsion (1755-1764) and its influence on tourism and related consumption in Nova Scotia; understanding fear of new technologies (information, reproductive



Leighann Neilson, Patrick Parnaby and Ben Bradshaw.

and bio) and the post-human; and exploring the use of ephemera as a data source in historical research.

Background: PhD candidate, Queen's University.

PATRICK PARNABY

Department of Sociology and Anthropology

Research interests: Environmental criminology, crime prevention through design, deviant behaviour, homelessness, risk and the urban environment.

Current work: Research on crime prevention through design in Ontario.

Background: PhD, McMaster University

DAVID STANLEY

Department of Psychology

Research interests: Organizational commitment, the role of emotions in the workplace, and organizational change management; meta-analysis, three-mode factor analysis and Monte Carlo simulations.

Current work: Examining the extent to which cross-cultural differences moderate the relation between organizational commitment and work outcomes, and investigating the methodological issues associated with missing data when assessing work-group diversity.

Background: PhD, University of Western Ontario.

CAROLYN TUBBS

Department of Family Relations and Applied Nutrition

Research interests: Facilitators of family stability, family rituals and parenting in low-income families.

Current work: African-American women's perspectives on shared parenting with men who have battered them; family time and family rituals in low-income families; social construction of mental health issues in low-income families.

Background: PhD, Purdue University.

SUNGHWAN YI

Department of Marketing and Consumer Studies

Research interests: Consumer motivation and emotions, judgment and decision-making, attitude formation and change, message framing, health decision-making, and decision and consumption patterns in different cultures.

Current work: Effect of regulatory fit on persuasion, role of consumer motivations in processing persuasive messages, message framing and persuasion, role of anticipatory feelings in judgment and decision-making, defensive processing of health-related messages, regulatory focus in different cultures.

Background: PhD, Pennsylvania State University.

PHOTOS BY MARTIN SCHWALBE

CAREER NIGHTS DRAW OUT THE BEST



More than 100 CSAHS alumni visited campus from October 2004 to March 2005 to participate in career nights. They shared job experiences and advice with more than 400 students.

Left: It was standing room only around speakers such as Jennifer Myles, BA '84, a social worker whose private practice includes individual and family therapy, education and consultation. **Right:** After braving a snowstorm to attend a career night, these alumni guests enjoyed meeting and dining with students. Clockwise from lower left: Undergraduate students Amanda Jay and Brandon Gorman, president and vice-president of the Commerce Society; John Alberico, B.Sc. '85 and M.Sc. '88, senior project manager at Rowan Williams Davies & Irwin in Guelph; Meline Batten of the Ontario Home Economics Association; Linda Zehr, B.A.Sc. '79 and M.Sc. '04, B.A.Sc. program counsellor at U of G; Ruthanne Finnigan, B.A.Sc. '97, and Tiziana Ceccato, B.A.Sc. '00, both high school teachers in Guelph; Minerva Rudman, B.A.Sc. '03, of the Canadian Mental Health Association; and Joseph Chen, B.Comm. '00 and M.Sc. '03, senior research executive at Millward Brown Canada in Toronto.

If you're interested in participating in a career night, contact Laurie Malleau at 519-824-4120, Ext. 52102, or lmalleau@uoguelph.ca.

COMING EVENTS

May 28 — Barbecue in the HTM Atrium for local grads.

June 25 — HAFA '90 class reunion.

Aug. 16 — HTM/HAFA golf day at Granite Ridge Golf Course in Milton, Ont.

Sept. 20 — Hospitality networking.

Oct. 17 — HTM/HAFA Alumni Association annual general meeting and reception.

For details on these events, visit the "Alumni Events" section of the college website at www.csahs.uoguelph.ca.

NOTICE FOR MAC-FACS GRADS

THE Mac-FACS ALUMNI Association will confirm a new name for the association at its June 25 annual general meeting, which begins at 10 a.m. in Room 116 of Macdonald Institute. For the full schedule of events, see www.alumni.uoguelph.ca.

PENNIE MAKES SOFT LANDING AT HTM

RYAN PENNIE, B.A.Sc. '91, vice-president for the Canadian operations of UBF Foodsolutions, was back on campus in November as executive-in-residence in the School of Hospitality and Tourism Management (HTM).

During his student days at Guelph, Pennie owned and operated a hot air balloon company called Cloud Busters Inc. He sold the business in 1991 and turned his career toward sales. He has held national management positions with J.M. Schneider, Lipton Monarch and Unilever Bestfoods Foodservice Canada. When UBF Foodsolutions North America was created in January 2003, he was promoted to vice-president, Canadian division. That same year, Pennie and UBF received the Gold Award for "Supplier of the Year" from the Ontario Hostelry Institute.

Pennie currently serves on HTM's policy advisory board and the Canadian Hospitality Foundation board.

200 STUDENTS RECEIVE AWARDS

ATOTAL OF 204 STUDENTS studying in departments across CSAHS were recognized and/or presented with awards at a ceremony last fall. Some \$300,000 was awarded, and 58 students were acknowledged as Dean's Scholars in 2004.

For more information, visit www.csahs.uoguelph.ca, and click "Awards."

HEDLEY HONOURED

THE DEPARTMENT OF Family Relations and Applied Nutrition is establishing a scholarship for a student in the Master of Applied Nutrition (MAN) program to honour retiring professor Margaret Hedley, B.H.Sc. '64 and M.Sc. '81. She taught in the department from 1981 to 2004 and was the driving force behind establishing the MAN program. Hedley is also a past president of the Mac-FACS Alumni Association.

To donate to the scholarship fund, contact Jennifer Barrett at 519-824-4120, Ext. 53371, or jebarret@uoguelph.ca.

ARE YOU IN TOURISM?

THE ONTARIO TOURISM Education Corporation is conducting a training needs assessment for the tourism industry of Ontario. Can you spare four minutes of your time to complete the survey and provide input based on training procedures within your workplace? Go to www.htm.uoguelph.ca and click on "News," then "Needs Assessment Survey."

CSAHS BULLETIN

Summer 2005

Produced by the College of Social and Applied Human Sciences

Contact:

Carmelina Ridi

Tel: 519-824-4120,

Ext. 53078

Fax: 519-766-4797

E-mail: cridi@uoguelph.ca

Website:

www.csahs.uoguelph.ca