



AHL LabNote Number 40

updated May 2020

How to pool samples for submission to the AHL Joanna Sawicki BSc, MBA

The Animal Health Lab recommends the following steps as a guideline to submitting pooled samples for testing:

Blood or serum/Swabs:

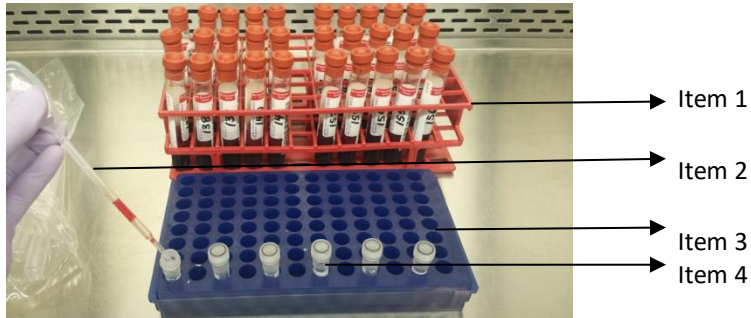
1. Process specimens as soon as possible.
2. Wear gloves. Change gloves between submissions.
3. If specimen is a swab, vortex before proceeding to the next step.
4. Centrifuge clotted blood samples and swabs in a hermetically sealed centrifuge cup (with centrifuge caps applied) at 1,500-2,000 x g for 10±1 min (Figure A).
5. Working in a biological safety cabinet, arrange spun samples in a rack (Figure B).
6. Clearly label the required number of 2.0 mL vials needed, (e.g., 20 blood samples pooled by 5 = 4 vials).
7. Using a new transfer pipette for each sample, pool equal amounts of sera/fluid from each sample to make a minimum of 1.5 mL of supernatant in a 2.0 mL vial.
8. Submit to the laboratory as soon as possible.

Note: We do not recommend pooling oral fluids and environmental fluid samples; for best results it is recommended to pool by maximum of 5.

Figure A: Sample centrifugation, before attaching centrifuge caps



Figure B: Sample arrangement, transferring samples to micro tubes



Item 1:

Product Description: **Unwire Test Tube Rack**

Part Number: 14-809-60

Supplier: Fisher Scientific

Call (519) 824-4120 x 54320 for pricing

*NOTE: One time purchase, can re-use racks indefinitely, please disinfect regularly to prevent contamination

Item 2:

Product Description: **Disposable Transfer Pipettes**

Part Number: 13-711-9CM

Supplier: Fisher Scientific

Call (519) 824-4120 x 54320 for pricing

Item 3:

Product Description: **Microcentrifuge Tube Racks**

Part Number: 05-541-45

Supplier: Fisher Scientific

Call (519) 824-4120 x 54320 for pricing

*NOTE: One time purchase, can re-use racks indefinitely, please disinfect regularly to prevent contamination, prices vary based on rack colour, above part number is blue.

Item 4:

Product Description: **Micro tube 2 mL, with screw cap; PCR certified**

Part Number: 72.694.406

Supplier: Sarstedt

Call (519) 824-4120 x 54320 for pricing