

SMALL RUMINANT

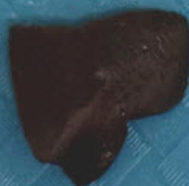
POSTMORTEM - ABORTION

FRESH TISSUES

LUNG X 2



LIVER



KIDNEY



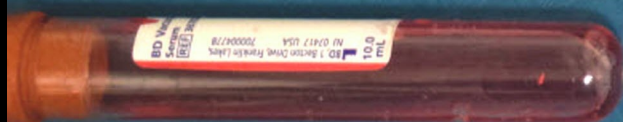
SPLEEN



PLACENTA X 3



THORACIC FLUID



ABOMASAL CONTENT

**Supplies:**

- ◇ Screw top formalin jars
- ◇ Whirlpak bags (one per tissue type)
- ◇ Sterile screw top tubes for fluids
- ◇ Sharpie marker to label

Important history to include: tests requested, differentials, lesions seen on PM

Contact a pathologist: 519-824-4120 x 54530

Get postmortem supplies: ahl.supplies@uoguelph.ca

Send in photos: ahlpah@uoguelph.ca

SMALL RUMINANT

POSTMORTEM - ABORTION

FORMALIN FIXED TISSUES

THYROID



HEART



LUNG X 2



LIVER



SPLEEN



ADRENAL



KIDNEY



PLACENTA X 3



MUSCLE



ABOMASUM



COLON



SMALL INTESTINE



BRAIN

