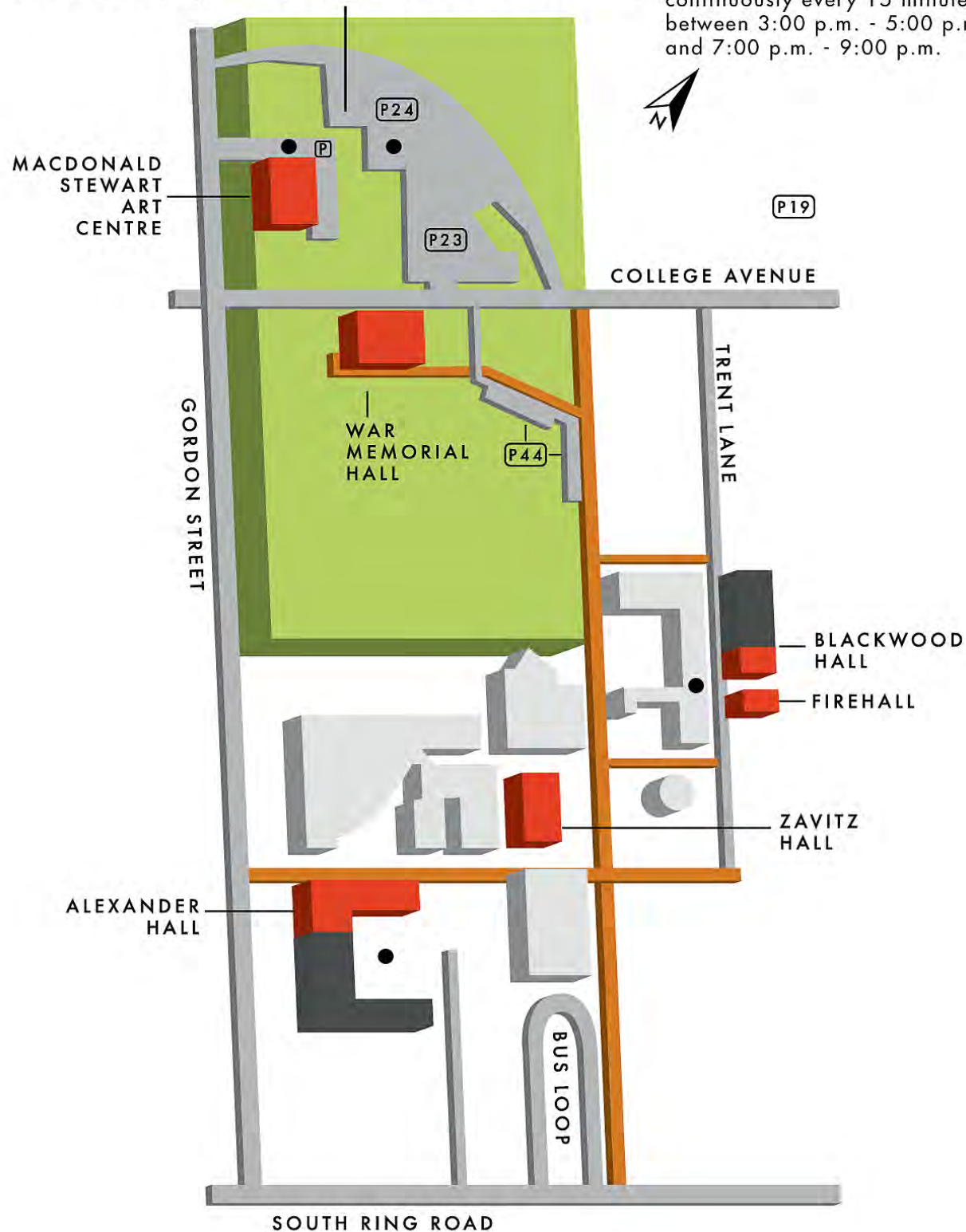


# OPEN STUDIOS, RECEPTION AND LECTURE LOCATIONS

PARKING AVAILABLE IN P/23/24 & P/19 AND MSAC

● Shuttle bus services all locations continuously every 15 minutes between 3:00 p.m. - 5:00 p.m. and 7:00 p.m. - 9:00 p.m.



3PM - 5PM & 7PM - 9PM  
WEDNESDAY MARCH 20 2013

# MFA

## OPEN STUDIOS

UNIVERSITY OF GUELPH  
MASTER OF FINE ARTS CANDIDATES  
SCHOOL OF FINE ART AND MUSIC

[uoguelph.ca/sofam/shenkman](http://uoguelph.ca/sofam/shenkman)

### BLACKWOOD HALL

- 1 Benjamin Klein
- 2 Matt Schust
- 3 Rachel Crummey
- 4 Jennifer Carvalho
- 5 Laura Anderson
- 6 Dustin Wilson
- 7 Maryanne Casasanta

### ALEXANDER HALL

- 281 Laura Findlay
- 283 Stephanie Cormier
- 356 Jen Aitken
- 356 Aryen Hoekstra
- 366 Amy Lockhart
- 357 Specialized Studios
- 358 Specialized Studios
- 362 Specialized Studios
- 363 Specialized Studios
- 364 Specialized Studios
- 367 Specialized Studios

### FIREHALL

- 1 Denise Digginson
- 2 Ella Dawn McGeough
- 3 Jenine Marsh

REFRESHMENTS IN BLACKWOOD HALL & ALEXANDER HALL NEAR SPECIALIZED STUDIOS 3rd FLR

FREE PARKING @ MACDONALD STEWART ART CENTRE & PARKING LOTS 19, 23, 24.

FREE SHUTTLE BUS BETWEEN PARKING LOTS, MACDONALD STEWART ART CENTRE, BLACKWOOD HALL & ALEXANDER HALL

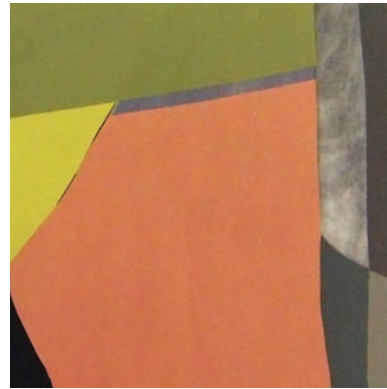




**JEN AITKEN**

makes sculptures that address architecture with a sense of absurdity, using systems of self-imposed limitations and adhering to strict principles of formal ambiguity and material clarity.

jenaitken.com



**RACHEL CRUMMEY**

combines casual mark making and careful composition to set up painting problems, which are worked out directly on the surface. Her pictures bear the traces of thoughtful absorption, loss of control, exuberance tempered by doubt, and a few accidents.

rachelcrumme.com



**AMY LOCKHART**

is an interdisciplinary artist working primarily in animation. As of late she was included in *Afterimage* at DePaul Art Museum in Chicago and *Hello Amiga* at Trinity Square Video in Toronto. Most recently her films were screened at the *No Woman No Art Festival* in Poland and the Museum of Moving Image in New York.

aloco275@yahoo.com



**LAURA ANDERSON**

invents provisional constructions to play with intervals, attachments, and phenomena of lightness.

lander08@uoguelph.ca



**LAURA FINDLAY**

investigates the fiction of memory through paintings.

laurafindlay.com



**JENINE MARSH**

makes sculpture that confronts surface as the site of communicability.

jeninemarsh.com



**MARYANNE CASASANTA**

is a photo-based artist exploring the exchange between art and the commonplace as well as the interstitial space between the art object and its documented image.

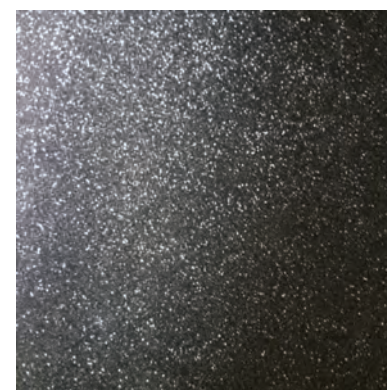
maryannecasasanta.com



**DENISE HIGGINSON**

depicts how people interact, shape, and are shaped by their surroundings. Using abstract elements to make up three-dimensional spaces, her paintings oscillate between flatness/abstraction and representation.

dhiggins@uoguelph.ca



**ELLA DAWN MCGEOUGH**

offers you a gateway and a warning.

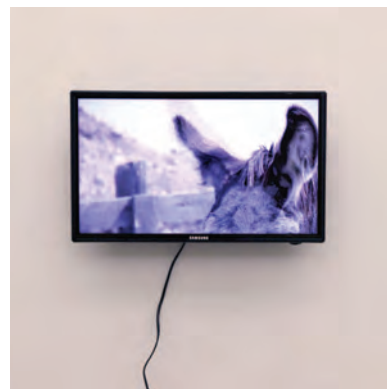
elladawn.com



**JENNIFER CARVALHO**

explores representational strategies and the breakdown of that information into paint and mark.

jenniferacarvalho.blogspot.com



**ARYEN HOEKSTRA**

interrogates the material specificities of the moving image and their effect on the shaping of behavior, gesture, and thought.

aryenhoekstra.com



**MATT SCHUST**

is a painter whose work explores colour, space & perception.

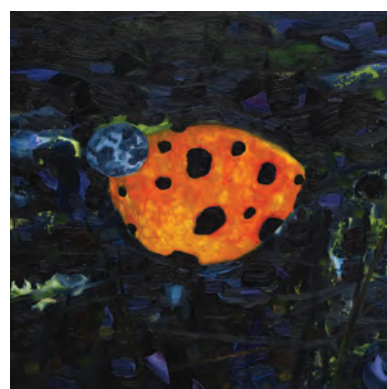
mattschust.com



**STEPHANIE CORMIER**

is looking for the edges of things and explores the possibility of creating objects and situations that blur the boundary between ourselves and everything around us.

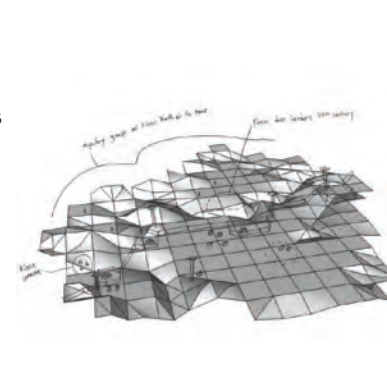
genmodpagan@gmail.com



**BENJAMIN KLEIN**

depicts a nocturnal landscape world, a borderline between chaotic wilderness and a secluded garden. These liminal scenes are populated by iconically anthropomorphic bugs, who may be psychologically sentient actors in a fragmented drama.

benklein05@yahoo.ca



**DUSTIN WILSON**

subverts his role as an artist by producing works that exist within metafictional story structures. To carry out rational processes based on irrational assumptions Wilson inhabits the self-reflexive character of the Futurologist.

futureliferegression.com