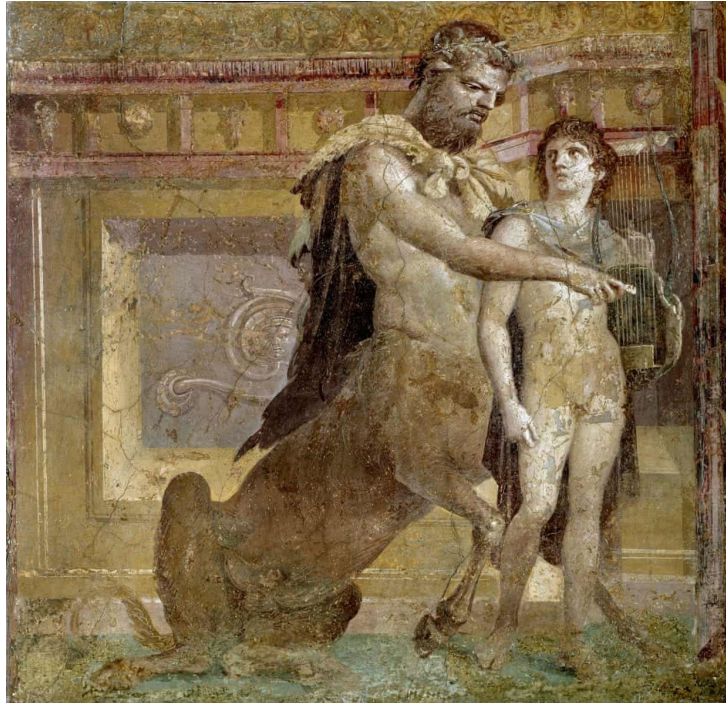


**SCHOOL OF LANGUAGES AND LITERATURES  
Fall Semester 2021**

**GREK\*1110-01  
INTRODUCTION TO ANCIENT GREEK**



The *Education of Achilles* by Chiron, fresco from Herculaneum

*Please note: This is a preliminary web course description only. The department reserves the right to change without notice any information in this description. The final, binding course outline will be distributed in the first class of the semester*

**INSTRUCTOR:** Martina Meyer, PhD

**TIME:** Monday, Wednesday in class 12:30-1:20pm. Friday classes are Zoom.

**LOCATION:** MacKinnon

**OFFICE HOURS:** TBA

**OFFICE:** TBA

**Course Description and Objectives:**

GREK\*1110 is the follow up to GREK\*1100. The course continues to introduce students to the fundamentals of the ancient Greek Attic dialect. As it is the basis of Classical Greek grammar it is the language of the tragedians Aeschylus, Sophocles, and Euripides; the historians of Thucydides and Xenophon; the philosophers Plato.

and Aristotle. This course continues to emphasize vocabulary, morphology, and syntax. Grammar reviews, as well as translation of sentences both from English to Greek and from Greek to English, and of brief passages from ancient authors are the basis of the student's homework throughout the semester. By the end of the semester, students will be familiar with and to read Greek authors. The course will focus on reading and writing rather than speaking, although students will be expected to read Greek aloud regularly in order to master correct pronunciation.

During the term students will work systematically through *Athanaze: Part 2*, memorizing the vocabulary and grammar of each lesson. Every week will include an opportunity (via translations from Greek to English and English to Greek) to practice using newly acquired vocabulary and analyzing grammatical elements of sentences. Weekly quizzes provide students with reinforcement of material, motivation to maintain a consistent study schedule, and regular feedback of progress in the course.

### **Learning Outcomes:**

The course goals, in addition to providing students with a firm grounding in Greek grammar and morphology, include giving students an improved understanding of English grammar and of English vocabulary and word origins. Moreover, while the primary focus will be on mastering forms and syntax, students will also be introduced to the basic aspects of classical Greek culture so that they are able to place the selections they read within a wider cultural context.

Students who successfully complete Greek 1110 will:

- Recognize ancient Greek vocabulary
- Analyze and explain morphology, and syntax
- Describe the influence of the Greek language on subsequent languages and literatures
- Read and translate selections from ancient Greek authors
- Develop an appreciation of Greek literature and culture
- Have the linguistic foundation for progression to GREK\*2020 or equivalent

**Text:** *Athanaze, An Introduction to Ancient Greek*, Book 2, Maurice Balme and Gilbert Lawall. 3rd Edition\*. Oxford University Press, 2015.

\*Older editions are acceptable.

### **Grade Distribution:**

**10 Weekly Homework Assignments** 20% (2% each) Assigned Monday & due Friday to Dropbox

**10 In class Quizzes** 30% (3% each) 10 minutes at the end of Monday class

(Best 8 out of 10)

**Translation Assignment** 10%, The Passage will be assigned Friday October 22<sup>nd</sup> and is DUE Friday, October 29<sup>th</sup> (you are encouraged to work with a partner).

**Final examination** 40%

\*\* The formats of all tests, quizzes and the final exam will be discussed in detail with examples.

\*\*\* There will be NO make-up quizzes.

\*\*\*\* Homework will NOT be accepted late, however, you may hand it in early!

**Notes to Students:**

1. Since tests are given in class time, there can be no conflicts. More than one test on the same day does not constitute a conflict. Plan your schedule ahead of time.
2. No electronic devices are to be operated during quizzes, tests, or exams.
3. Those who miss classes or parts of classes remain responsible for the material they have missed. Attendance is essential.