



UNIVERSITY  
of GUELPH

COLLEGE of ARTS

# THE ARC AT GUELPH

LIGHTING THE WAY FORWARD





# THE ARC

The University of Guelph is transforming the North Wing of the MacKinnon Building into a state-of-the-art centre for the performing arts. This physical transformation will result in a 140-seat black-box theatre, a 152-seat recital hall, and a new 160-seat performance lab for research in improvisation.

Join us in bringing this new space to life!



The University of Guelph is proud to support this \$23 million project: the exciting transformation of the MacKinnon Building and the construction of the new ImprovLab. The new performing arts wing will be a vital part of the U of G student experience, showcasing the key role arts play in improving life.

— **President Charlotte Yates**

The MacKinnon Renovation project is an essential component of the University of Guelph's commitment to programs and research in the performing arts. These new facilities will provide outstanding conditions for our faculty's ambitious inquiries into the power and impact of performance and creative innovation. This building was originally designed by world-famous architect Josep Luis Sert in the late 1960s, and it is only fitting that the world-class architects of Diamond Schmitt take on the task of reimagining this space for the twenty-first century.

— **Samantha Brennan**, Dean of the College of Arts







**THE PERFORMING ARTS AT THE UNIVERSITY OF GUELPH**

**WHO WE ARE**

2000+ STUDENTS IN OUR COURSES/YEAR    50+ PUBLIC EVENTS/YEAR  
85+ STAFF, GRADUATE STUDENTS, AND FACULTY    40+ ENGAGED COMMUNITY PARTNERS

The Guelph Jazz Festival  
Silence Sounds  
The Hillside Festival  
The Guelph Film Festival  
KidsAbility  
Hammer Theatre Company  
Nightwood Theatre  
Musagetes  
Art Gallery of Guelph  
The Guelph Symphony Orchestra  
Open Ears Festival of Music & Sound  
Mozilla Foundation  
The National Film Board  
The CRTC  
Musique Trois Femmes  
and many more...





Adam Bowman, Water Moves (2013): courtesy of IMAGEO artworks, photo by Austin Gibson Photography

# The Arts Research

Refuge, retreat, shelter, vessel, ark. Historically, an ark has been the keeper of that which must endure. We find ourselves at a point where the spaces necessary to explore and develop craft, curiosity, and beauty are indeed endangered. A resilient container in which the arts and artists can grow and evolve is required.

In architecture the arch is often asked to bear great weight. Culturally, that is what is being asked of us now. Artistically, it is what has always been, and will continue to be, asked of artists. In a time when venues and creative spaces are subject to the extinguishing pressures of uncertainty and flux, the ARC will bear the weight and help us to lead toward the future.

— **Adam Bowman,**  
Guelph Musician  
3-time Juno-nominated drummer





# HOME

## Guelph's Artistic Heartbeat

Located in the heart of the University of Guelph's historic campus and drawing on the City of Guelph's vibrant arts scene, the Performing Arts at the University of Guelph is home to degrees in Music, Improvisation, and Theatre Studies. Together, these programs serve as the artistic heartbeat of one of Canada's top comprehensive universities.

Featuring concerts, theatrical productions, festivals, recitals, workshops, colloquia and more, these programs bring the community—and indeed the world—to campus to share in artistic excellence. The transformation to the MacKinnon building creates an essential environment to continue this work and enhance the visibility of our programs within the University and beyond.





# VISION

Ruth Acheampong,  
class of '19,  
photo by  
Travis Westlake

## Illuminating Change

In a world altered and challenged by COVID-19, the arts are in need of leadership and security. Artists help us navigate change, and engagement in the arts provides social and emotional experiences desperately needed today. We are called to think collectively about the importance of the arts to the human experience, and we must imagine new pathways forward.

The ARC will provide a space for this work alongside a dynamic, clear vision for the future of the Arts in Guelph.





# CRAFT

Band ExcuseMe, formed at the University of Guelph in 2017: Adam Kuhrt, Aleks Liskauskas, Dylan Creed, Heyden Reay, and Jo Seymour, photo used with permission

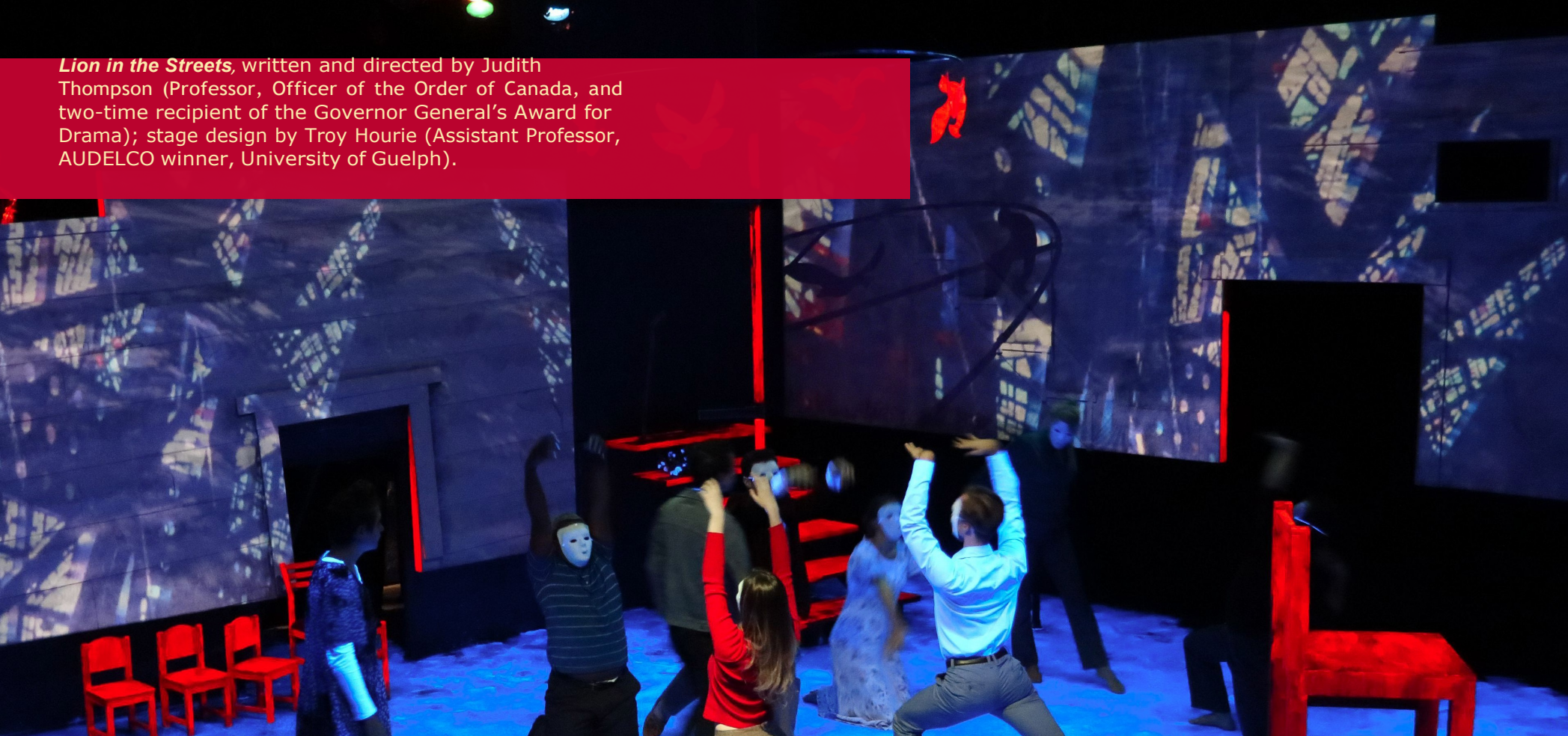
## Excellence by Design

For the first time in the University of Guelph's history, the newly created ARC will provide a vital and vibrant home for the Arts on campus, equipped to support arts researchers, their students, and their community partners. This transformation will provide exciting opportunities for our award-winning faculty who oversee programs known for their community-connected, contemporary, and inclusive content.

The ARC will shine a bright light on our students as they push the envelope, take risks, and tap into self-expression and creativity with tremendous results.



*Lion in the Streets*, written and directed by Judith Thompson (Professor, Officer of the Order of Canada, and two-time recipient of the Governor General's Award for Drama); stage design by Troy Hourie (Assistant Professor, AUDELCO winner, University of Guelph).



## Learning through Creation

Ongoing research, conducted by award-winning faculty, links scholars from across Canada and around the globe to participate in exciting and critical inquiry.

The ARC will connect researchers through cutting-edge technology and support unique areas of study and research-creation. Versatile spaces will allow for immersive and adaptive audience experiences brought to life in the hands of some of Canada's top theatrical and musical practitioners. These facilities will bring renowned artists to campus and allow the research conducted here to have impact on a global scale.

# EXCELLENCE





Dong-won-Kim, International Institute for Critical Studies in  
Improvisation, Percussion Ritual, October 2019. Photo: Richelle Forsey

## Spotlight: Critical Studies in Improvisation

The multi-award-winning International Institute for Critical Studies in Improvisation brings together a dynamic team of 58 researchers from 20 different institutions around the world. Over the past decade, these researchers have worked with more than 30 community organizations, and the output of this research team has played a major role in defining the field of Improvisation Studies.

The ARC will be home to this research institute's new, 160-seat ImprovLab. This space will welcome discussion and encourage dynamic interactive practices that will highlight the moving power of improvised performance and community-facing research.

# INNOVATION



The Arc serves as a hub for music, theatre, and improvisation, putting us on the map as a creative and cultural destination for the University of Guelph, our community partners, and enthusiastic audiences from the local to the global.



NEW ENTRANCE FROM WINEGARD WALK



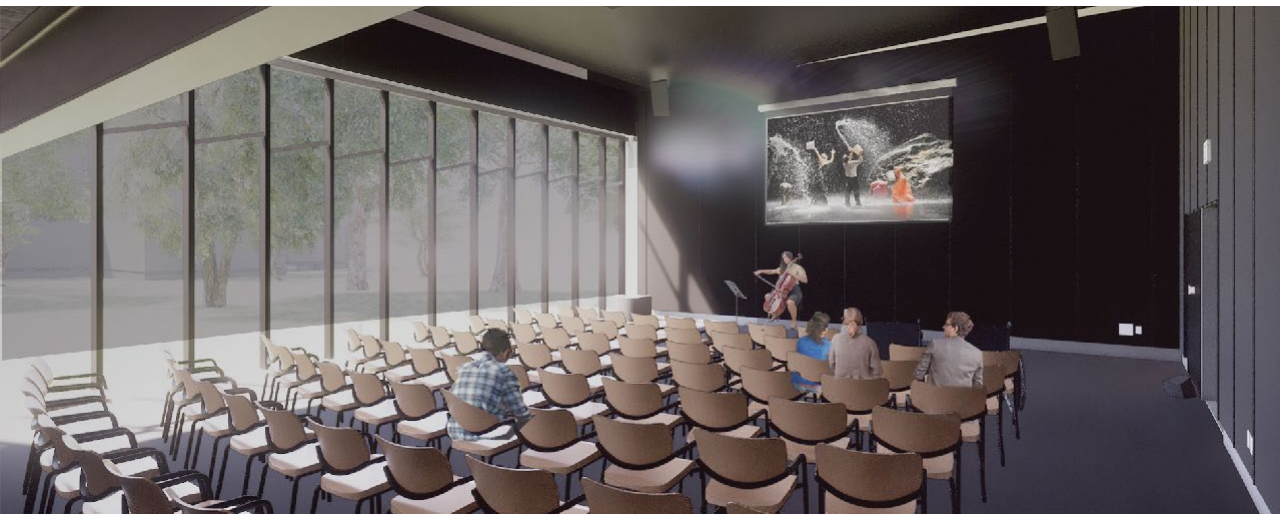
LEGEND

- |   |   |
|---|---|
| 1. The ARC  | 9. College of Biological Science                          |
| 2. 150 - seat Recital Hall                                | 10. College of Physical Engineering and Physical Sciences |
| 3. 150 - seat Black-Box Theatre                           |   |
| 4. ImprovLab  |   |
|   | 11. University Centre                                     |
| 5. Ontario Agricultural College                           | 12. Johnston Green  |
| 6. Gordon S. Lang School of Business and Economics        | 13. The Bullring  |
| 7. College of Social and Applied Human Sciences           | 14. Gryphon Stadium                                       |
| 8. Ontario Veterinary College                             | 15. Alumni Stadium  |
| 9. College of Biological Science                          | 16. Art Gallery of Guelph                                 |
| 10. College of Physical Engineering and Physical Sciences | 17. Arboretum   |



SITE PLAN OF UNIVERSITY OF GUELPH CAMPUS





IMPROVLAB



PERFORMANCE & TEACHING SPACE



140 - SEAT BLACKBOX THEATRE

The technological competencies, collaborative skills, practice-based research expertise, and community literacies that students, community partners, and the research team will develop at our ImprovLab are in high demand across a range of sectors and markets.

Our Institute's team members have already trained and mentored several hundred students and these students are now employed in a range of influential academic, professional, financial, community-based, and public-sector roles.

— **Dr. Ajay Heble,**  
 Director, International Institute for  
 Critical Studies in Improvisation  
 Professor, School of English and  
 Theatre Studies  
 Founding Artistic Director of  
 The Guelph Jazz Festival (1994-2016)





The new renovation and addition to the MacKinnon Building is an important step in modernizing our facilities in Theatre Studies to provide spaces where students will have rewarding practical experiences in line with current conditions in the professional world.

At a time when many universities are cutting back arts programming, the University of Guelph is investing in the arts, which signals the importance of these areas within the university. The new design will foster an era when the three schools can cross-pollinate, collaborate, and evolve.

— **Troy Hourie,**  
Assistant Professor  
Undergraduate Program Coordinator  
Theatre Studies



The transformation of the MacKinnon building signals more than the renewal of design and repurposing of space. Instead, it marks a point of growth for our programs as we move into a facility that is constructed with the needs of our students and the pursuit of creativity in mind.

— **Dr. Alyssa Woods,**  
Assistant Professor of Music  
Applied Music Coordinator







MAIN LOBBY TO THE ARC



150 - SEAT RECITAL HALL



THE ARC AT THE UNIVERSITY OF GUELPH - LEVEL 01 NAMING OPPORTUNITIES

1 - Main Lobby	1280 SQ. FT	\$500,000	
2 - ImprovLab	1690 SQ. FT	\$400,000	
3 - 150 - seat Recital Hall	2230 SQ. FT	\$400,000	
4 - 140 - seat Blackbox Theatre	1063 SQ. FT	\$250,000	
5 - Costume Shop	1110 SQ. FT	\$100,000	
6 - Green Room	340 SQ. FT	\$60,000	
7 - Seminar Room	448 SQ. FT	\$50,000	
8 - Practice Rooms	134 - 203 SQ. FT EACH	\$10,000 EACH	
9 - CFI Labs	135 - 148 SQ. FT EACH	\$15,000 EACH	
10 - Multi-Purpose Room	1156 SQ. FT	\$150,000	

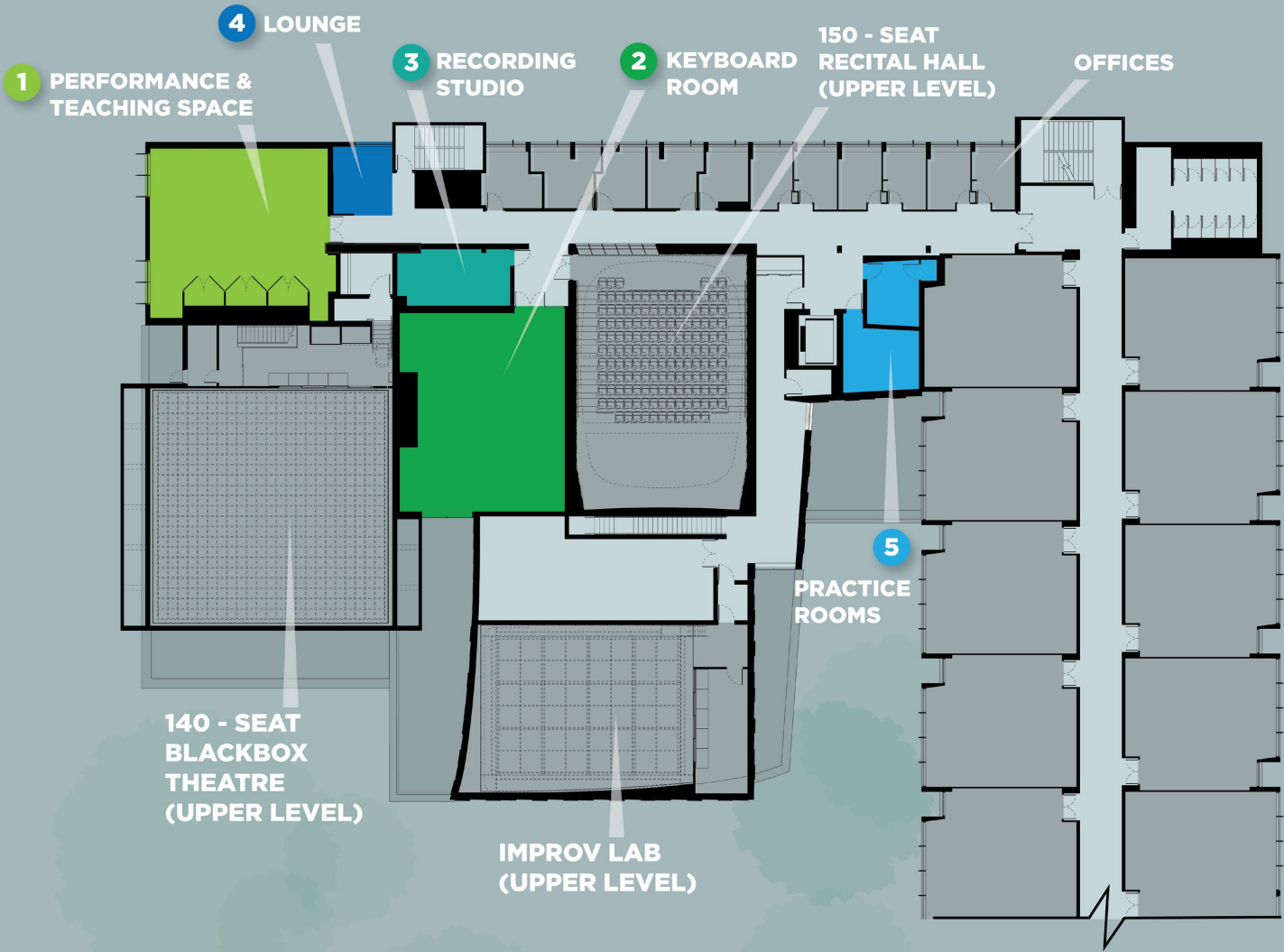


LEVEL 01 FLOOR PLAN



THE ARC AT THE UNIVERSITY OF GUELPH - LEVEL 02 NAMING OPPORTUNITIES

1 - Performance and Teaching Space	1088 SQ. FT	\$100,000	
2 - Keyboard Room	1296 SQ. FT	\$150,000	
3 - Recording Studio	254 SQ. FT	\$25,000	
4 - Lounge	174 SQ. FT	\$25,000	
5 - Practice Rooms	130 - 400 SQ. FT EACH	\$10,000 EACH	

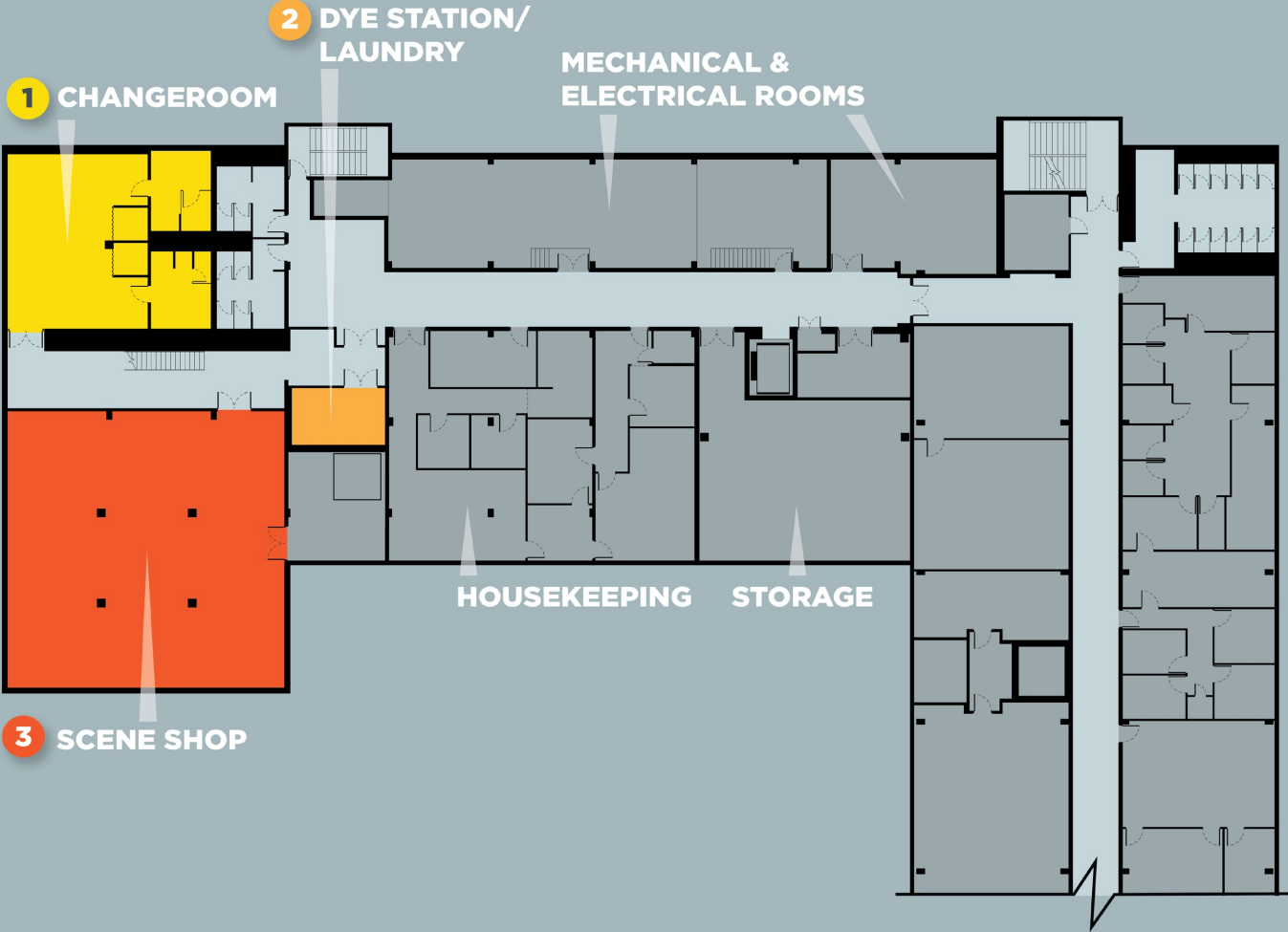


LEVEL 02 FLOOR PLAN



THE ARC AT THE UNIVERSITY OF GUELPH - LEVEL 00 NAMING OPPORTUNITIES

1 - Changeroom	775 SQ. FT	\$50,000	
2 - Dye Station/ Laundry	168 SQ. FT	\$15,000	
3 - Scene Shop	2432 SQ. FT	\$200,000	



LEVEL 00 FLOOR PLAN



*Elektra*, starring Shauna Thompson (National Theatre School, BA University of Guelph) as Elektra.

# A BRIGHT FUTURE

## Imagine

You can help make this transformation possible. The College of Arts, on behalf of the University of Guelph, respectfully requests that you consider a gift towards The Arc. Join us in bringing these new facilities to life, creating a new legacy for students, faculty, and the Guelph community. With your assistance, this space will open up new stories, melodies, and improvisations for the next generation of creative performers.

Join us in lighting the way forward.





“It is impossible to overstate the role of the performing arts as we navigate through and recover from the global pandemic. COVID-19 has frayed the fabric of humanity. It has deprived us of the very things that define us as humans, especially our need to collectively share and revel in the wonders of human creativity. The ARC provides a unique opportunity to help stitch us together again. With its unique design, centred on human performance, it can help us regain what we have lost, enable us to gather again to experience human creativity, to help reweave our humanity.”

— **Malcolm Campbell**, Vice President of Research



IMPROVE LIFE.

## COLLEGE *of* ARTS

### Contact

Mary C. Walsh, MBA  
Senior Development Manager,  
College of Arts  
University of Guelph, Guelph, ON N1G 2W1

E: [mary.walsh@uoguelph.ca](mailto:mary.walsh@uoguelph.ca)  
T: 519-824-4120 ext. 53750  
C: 519-827-7856

Dr. Kimberly Francis  
Director of Interdisciplinary Programs,  
College of Arts  
Associate Professor of Music, School of  
Fine Art and Music  
University of Guelph, Guelph, ON N1G 2W1

T: 519-824-4120 ext. 52362  
E: [kfranc02@uoguelph.ca](mailto:kfranc02@uoguelph.ca)

### ARC /ärk/

A sustained glowing release of  
electricity between two points of energy

The path above and below the horizon

A continuous progression of development

### ARK/ärk/

A vessel meant to protect the valuable  
and the sacred

### ARCH /ärCH/

A curved symmetrical structure capable  
of supporting immense **weight**





IMPROVE LIFE.