

# Molecular and Cellular Biology: MSc, PhD

The MCB graduate program offers opportunities for interdisciplinary studies in molecular and cellular biology leading to the MSc and PhD degrees. The research groups directed by the faculty are engaged in the pursuit of fundamental and applied research questions involving diverse biological systems (plants, humans and other animals, prokaryotic and eukaryotic microbes). In general, they follow lines of scientific enquiry at the level of molecules to cells.

## Faculty

Many faculty members in the program are nationally or internationally recognized as leaders in their research fields. They include Canada Research Chairs and University Research Chairs, as well as recipients of other national career development awards. The faculty members have received many high-profile awards for research and teaching. Faculty members carry out well-funded, leading-edge research in fundamental aspects of molecular and cellular biology and address major emerging issues in the area of cell and plant biology, biochemistry, microbiology and molecular biology and genetics.

## Research Environment and Facilities

We have a wide range of state-of-the-art facilities at the University of Guelph that contribute to a high-quality research and graduate training environment. This includes laboratories associated with the Advanced Analysis Centre and its constituent laboratories dealing with Confocal and Electron Microscopy, Advanced Genomics Technologies, Mass Spectrometry, NMR, X-ray crystallography, and facilities for the growth of bacterial, yeast and mammalian cells. Additional equipment is available to support all avenues of contemporary research in the molecular biosciences. All of these facilities are located in the Science Complex, a 400,000 square foot building designed to enhance team-based science that crosses traditional discipline boundaries.

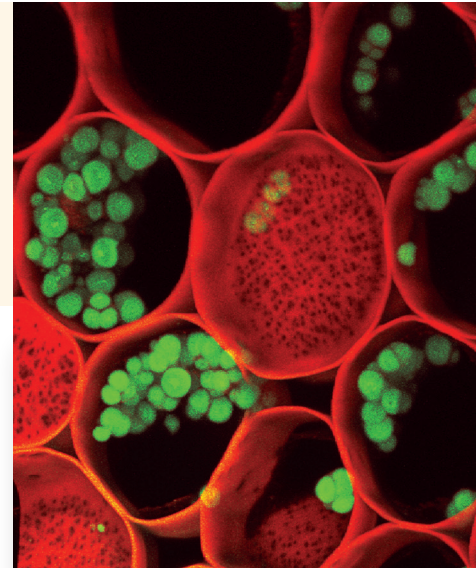
## Funding

All graduate students are guaranteed financial support through Research Assistantships, Teaching Assistantships, and internal/external scholarships.

## Admission Requirements

Students can enter the Molecular and Cellular Biology program with an Honours Bachelor's degree or equivalent or a Master's degree in a wide range of fields including: Molecular Biology, Genetics, Botany, Biochemistry, Cell Biology, Microbiology, Biophysics, and Biology. Students with advanced academic and research aptitudes can apply for transfer into the PhD program after partial completion of the MSc degree requirements.

For more details, see our web page:  
<http://www.uoguelph.ca/mcb/>



## Fields within Molecular & Cellular Biology:

- biochemistry
- cell biology
- microbiology
- molecular biology & genetics
- plant biology

---

## CONTACT INFORMATION:

### Graduate Coordinator:

Andrew Bendall  
519-824-4120 ext. 53491  
[abendall@uoguelph.ca](mailto:abendall@uoguelph.ca)

### Graduate Secretary:

Carol Schlaht  
519-824-4120 ext. 53815  
[cschlaht@uoguelph.ca](mailto:cschlaht@uoguelph.ca)

### Admissions Secretary:

Karen White  
519-824-4120 ext. 52730  
[cbsgrad@uoguelph.ca](mailto:cbsgrad@uoguelph.ca)