



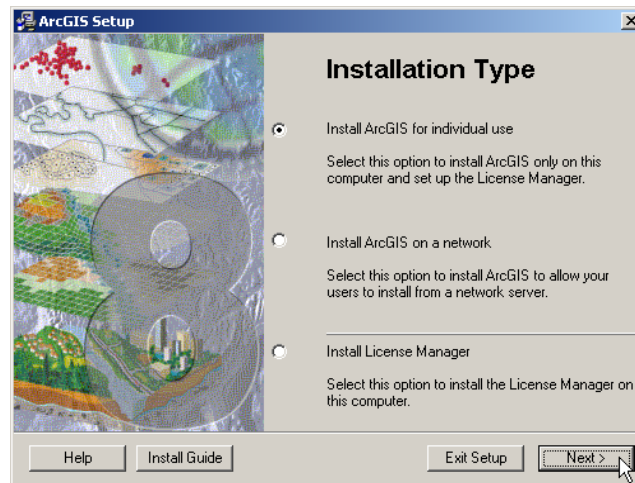
## QuickStart Guide to Installing ArcGIS Desktop



The QuickStart Guide assists you in getting started using the features of the ArcGIS Desktop as quickly as possible.

Be sure to terminate all non-essential applications before proceeding with the installation (this includes but is not limited to: ICQ, anti-virus software, e-mail clients, etc.) If you have a previous version of ArcGIS, be sure that it is uninstalled before proceeding.

1. On the first screen will ask which Installation Type to perform, choose the first option “Install ArcGIS for individual use” and click the Next button.

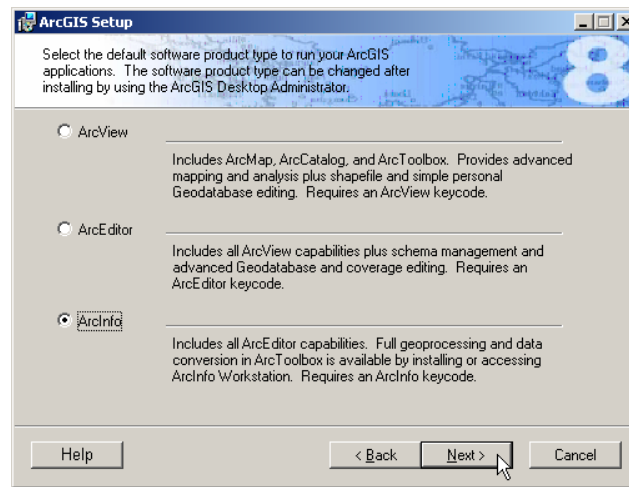


2. The installation program will next ask to install the license manager. Select the last option to Setup the License Manager Later and click the Next button.

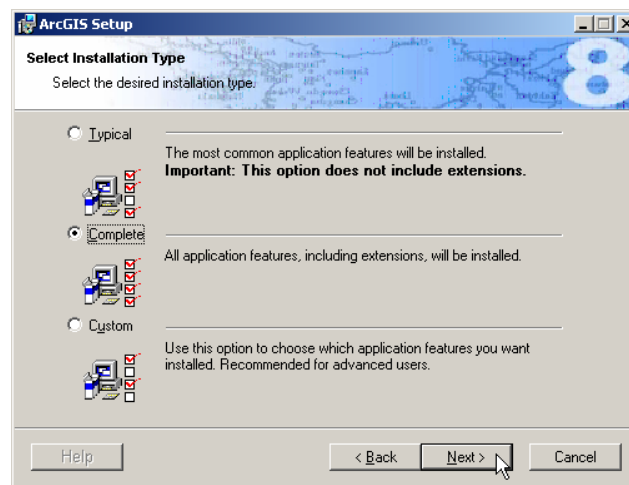


3. ArcGIS may need to update the system files on your computer, click the “Update Microsoft system files” button. Once the update program has finished updating the Microsoft system files on your computer, the computer will need to be restarted by clicking on the “Restart computer” button. In order to continue with the installation you must log on to the computer with the current user login.
4. A welcome screen will appear click on the Next button. The next window will ask you to read a license agreement for ArcGIS software. If you agree with license agreement click the “I accept the License Agreement” option otherwise click the other option to not accept the license Agreement and click the Next button.

5. The next screen asks you to choose the default software product type (ArcInfo, ArcEditor and ArcView) for our ArcMap, ArcCatalog and ArcToolbox software applications. The software product can be changed after installation by accessing the ArcGIS Desktop administrator. Choose the software product type you wish to install and click the Next button.



6. The next screen ask you if wish to install the optional ArcGIS extensions and installation components. To install optional components including the ArcReader application, choose the complete or custom installation type. "Complete" installs all extensions and installation components while 'custom' allows you to choose specific extensions and installation components.



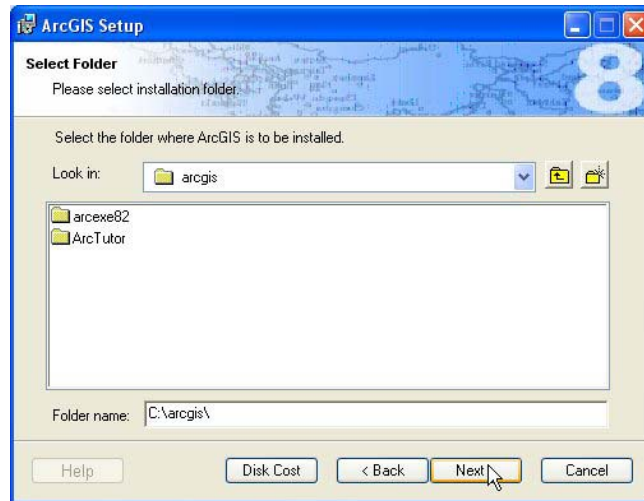
If you choose to install one or both of these options, separate installations for the selected components will automatically start.

As you continue with the installation, you maybe required to install additional components. Follow Step 6 above, to determine which installation type is best suited for your needs. If you wish to install Crystal Reports or ArcInfo Workstation, you will need to download "Crystal Reports Version 8.5 for ESRI" or ArcInfo Workstation from the CCS Software Distribution Site.

**Note:** For information about installing and using Crystal Reports Version 8.5 for ESRI, see the UserGde.pdf file, located in the \Docs folder on the Crystal Reports Version 8.5 for ESRI CD or in the Seagate Crystal Reports folder after installing.

**ArcView 3.x users:** Installing Crystal Reports 8.5 will cause the Report Writer extension in ArcView 3.x to not work properly. Crystal Reports 8.5 can not properly display a report created in ArcView 3.x. When a patch becomes available for ArcView 3.x, it will be available from the ArcOnline download page, <http://arconline.esri.com>. Check ArcOnline for the availability of the ArcView 3.x patch for Crystal Reports 8.5.

7. The following screen appears. Click the Next button to proceed with the actual installation of the software, or click the folder icon to change the location where you wish to install the software, then click Next. When it asks you if you are ready to install, click the Next button again.



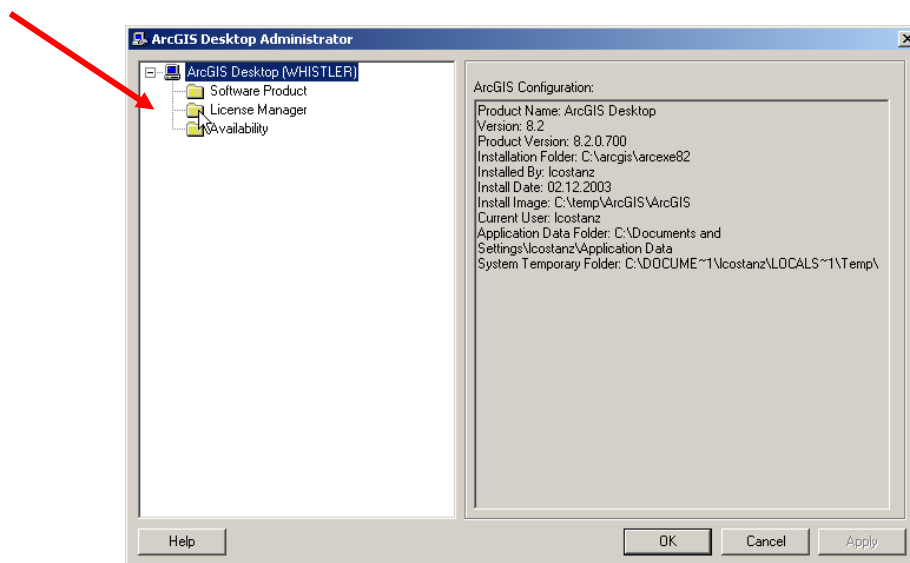
8. A window will appear to indicate that the software has finished installing: click the Finish button. Proceed to setting up the License Manager.

## Setting up the License Manager

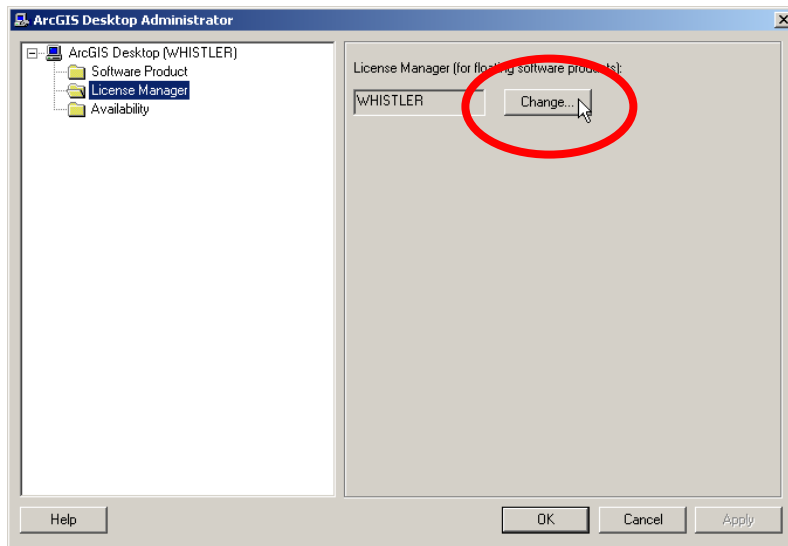
A license manager is a daemon (background process) on UNIX server. At the University of Guelph a license server machine is setup with ESRI license manager. When the ArcGIS Desktop application is started up, your computer will contact the UNIX server for permission to run the application.

The following steps outline how to setup the license manager.

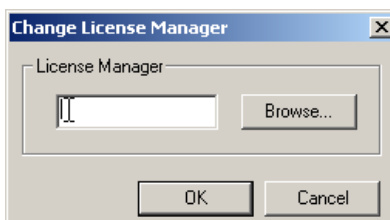
1. Click on the Start button > Programs > ArcGIS > Desktop Administrator. The window below appears, in the left window pane, click on the folder next to License Manager.



- The following window appears, click on the “Change” button on the right side window.



- The following dialog appears. In the text box type in the license server manager provided on the receipt issued by the CCS Software Distribution Site and click on the OK button.



- In the next window click on the Apply button and then on the OK button. You are done setting up ArcGIS Desktop and can begin to enjoy this GIS software package.

If you have any questions regarding the installation of the ArcGIS Desktop, please call x58002 or look online: [www.uoguelph.ca/ccs](http://www.uoguelph.ca/ccs).