



# Graduate Seminar

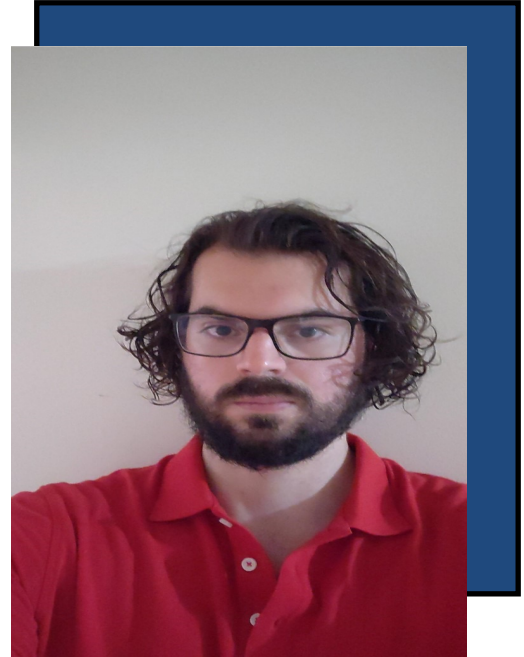
Department of  
Economics and Finance

Gordon S. Lang School  
of Business and Economics

## Nico Meffe

MA Candidate

Supervisor: Dr. Kris Inwood



**Title: Socioeconomic factors and their relationship to first world war survival rates**

The paper combines previously collected 1901 census data with newly gathered data from World War 1 personnel files regarding length of service. I examine whether different socioeconomic and geographical factors influence the probability of a soldier's probability of surviving The Great War. The analysis employs Cox Proportional-Hazard models as well as Kaplan-Meier estimation to provide comparative analysis.

**Date: Friday August 16th 2019**

**Time: 2:00 PM**

**Room: Mackinnon 720**

