

Neuroscience: MSc, PhD

Collaborative Program

CHANGING LIVES
IMPROVING LIFE

The collaborative Neuroscience program provides a specialization for students engaged in research in the rapidly expanding field of Neuroscience, by permitting students to combine their departmental degree with multidisciplinary exposure to the field of Neuroscience. This unique combination of multidisciplinary studies provides students with the best possible foundation for academic careers in Neuroscience and related areas. The program includes participation from core faculty in the following departments: Biomedical Science, Clinical Studies, Human Health & Nutritional Sciences, Integrative Biology, Molecular & Cellular Biology, Psychology and Animal & Poultry Science.

Application & Admission Process

MSc/PhD students interested in pursuing a collaborative program must first meet the admission requirements of the primary program of interest (see participating department list in left column) and second the admission requirements of the collaborative program.

When completing the online application, a student will select a primary department of interest and then identify a collaborative program as a secondary focus (i.e. MSc PSYC+NEUR, MSC.HHNS+NEUR, PHD. APS+NEUR, etc.). A separate application is not required for the collaborating department.

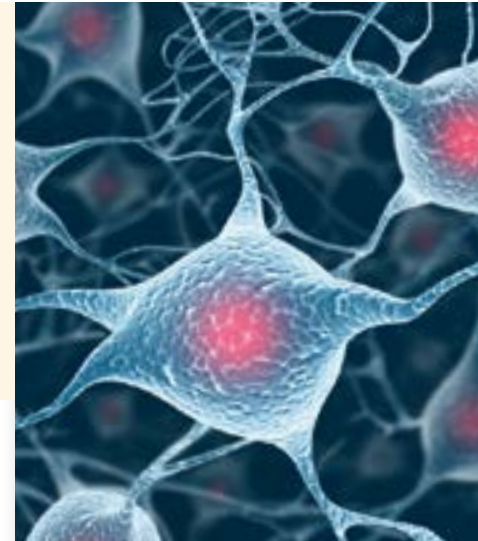
Courses

In addition to courses required by the participating program, students enrolled in the collaborative Neuroscience program must complete: NEUR*6000 Principles in Neuroscience and NEUR*6100 Seminar in Neuroscience.

Students in this field may also apply for the collaborative Neuroscience MSc/PhD program www.ovc.uoguelph.ca/biom/collabgrad/neuroscience to receive a specialization in Neuroscience along with their Psychology graduate degree.

Faculty

Graduate studies at the University of Guelph are supported by internationally renowned faculty who are engaged in leading-edge research and practice. You will have an opportunity to work closely with faculty members who are committed to the development of their students and will empower you to think critically, explore new realms of knowledge and apply what you have learned in order to develop the skills you need to be competitive in your discipline.



Participating Departments:

- Psychology
- Biomedical Science
- Human Health & Nutritional Sciences
- Integrative Biology
- Molecular & Cellular Biology
- Clinical Studies
- Animal & Poultry Science

CONTACT INFORMATION

Graduate Coordinator:

Neil MacLusky
nmaclusk@uoguelph.ca
519-824-4120 ext. 54700

Graduate Program Assistant:

bmsggrad@uoguelph.ca
519-824-4120 ext. 54780