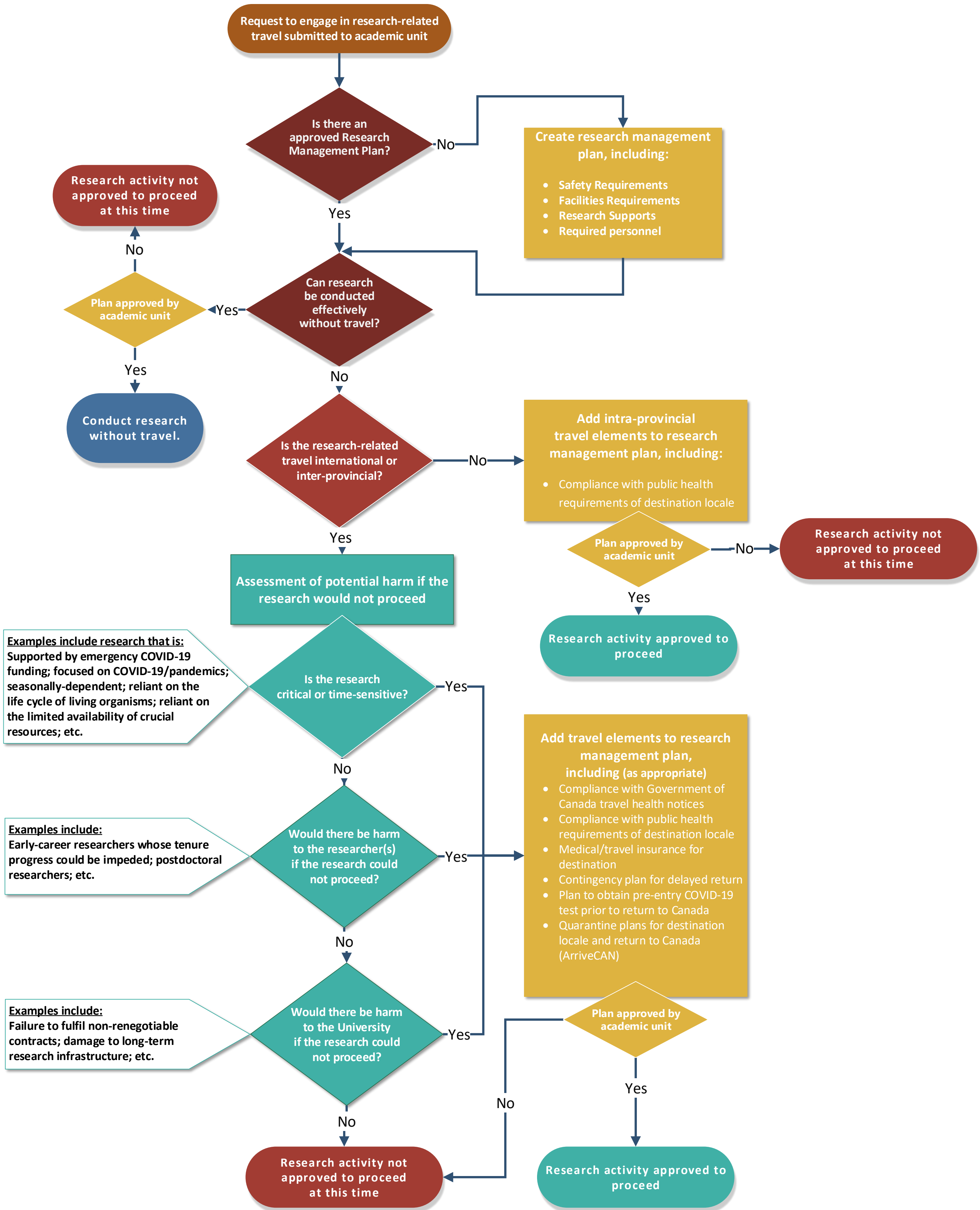


Approval process for research-related travel at University of Guelph



Examples include research that is:
Supported by emergency COVID-19 funding; focused on COVID-19/pandemics; seasonally-dependent; reliant on the life cycle of living organisms; reliant on the limited availability of crucial resources; etc.

Examples include:
Early-career researchers whose tenure progress could be impeded; postdoctoral researchers; etc.

Examples include:
Failure to fulfil non-renegotiable contracts; damage to long-term research infrastructure; etc.